



INSTRUCTION MANUAL SMART LIFE SMOKE ALARM

SL-DS01



MADE IN P.R.C. FOR
SPACETRONIK SP. Z O.O.
WIEŚNÓWA 36, 64-000 KOŚCIAN, POLAND
INFO@SPACETRONIK.EU
WWW.SPACETRONIK.EU

Product Description

Wi-Fi smoke detector is used for the detection of fire that may happen or have happened. It is a micro-innovation on the basis of the traditional smoke sensor technology, by working with the third-party cloud platform. Focusing on the development of "early warning" to let people pay more attention to their own safety. Smoke concentrations is detected basing on the principle that particles in smoke refract infrared light. Since the smoke refracts the infrared emission light in the detector and the intensity of the infrared light received by the receiving end reaches the set threshold, the smoke detector is considered to be effective, thereby generating a smoke warning signal. The smoke detector provides live sound and light alarm, also inform alarm situation via Wi-Fi network.

Applicable Place

Suitable for residential, shopping malls, warehouses, restaurants, parking lots, libraries, schools, hospitals, etc. Different smoke alarm thresholds can be set according to the temperature, humidity and wind speed in different places, to meet different smoke alarm requirements.

Function Description

1. Press the button for testing and sound silence manually.
2. Support on-site alarm and alarms via local Wi-Fi network cloud transmission.
3. Low electricity detection, daily inspection.
4. Inbuilt LEDs indicate alarm status, device status and network status.
5. Support EZ mode and mode AP network configuration methods.
6. Battery-powered, long-term low-power support.

Electrical Specifications

Operating Power: 2 x AAA batteries
Power Consumption: alarm current <300mA
Standby Current: <30pA
Network Way: WiFi 2.4G - 802.11 a/b/g/n
Alarm Indication: red running lights
Sound Level: >85 dB/3M
Monitoring Range: 30 square meters
Working Temperature: -10° + +50° C
Working Humidity: 10% + 95% RH

- 2 -

Installation Test

1. Select the appropriate location to fix the detector base with screws. Central ceiling of the detection area is suggested.
2. Put batteries inside the detector, press the testing button, the running light will on and then go out; press the Wi-Fi configuration button and hold for 5 seconds, the device standby indicator will flash quickly to indicate that the device is connected to the local Wi-Fi network; once the device standby indicator is keeping on and then turning off again, indicating that the device is connected to the network cloud platform successfully.
3. In standby mode, the device indicator flashes one time every 20 seconds.
4. Press the test button for more than 3 seconds, the device will make a sound and light alarm, also send an alarm message to the cloud platform. The mobile APP will also display the self-test result; In alarming status, press the mute button, the alarm sound will disappear, mobile APP will also inform the users that the alarm is released.
5. The smoke can be directly blown into the detector for testing. When the alarm occurs, the LED light will flash rapidly, the detector will alarm and send signal to the platform. Press the mute button to stop the alarming.
6. The horizontal distance from the detector to the wall and beam should not be less than 0.5 m.
7. There should be no obstructions within 0.5 m of the horizontal distance around the detector.
8. The horizontal distance from the detector to the nearest side of the air conditioning air outlet should not be less than 1.5 meters, and the horizontal distance of the air supply ceiling opening should not be less than 0.5 meters.

Precautions

1. The detector is not suitable for usage in the environment of extremely cold and hot, high wind speeds and dust.
2. The smoke inlet and outlet shall be cleaned in every 6 months, to prevent the detector from being detected by dust blockage.
3. When the battery power is low, the detector LED will flash every 4 seconds to inform users to replace the battery.

- 3 -

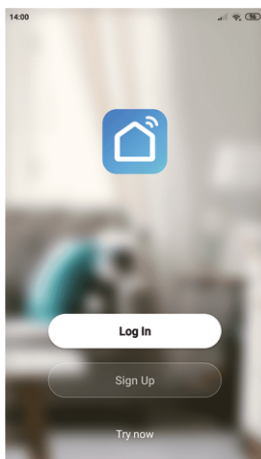
APP Instruction

1. Download "smart life" APP

Search „smart life“ in application market to download and install the APP.

2. Registration

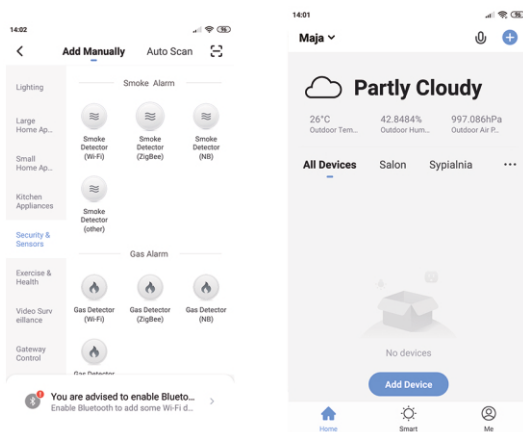
Click the APP and register an account according to the wizard.



- 4 -

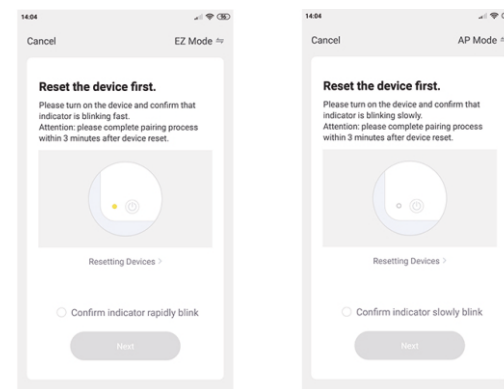
Add Device

Click the APP and log in, click [Add Device] --> [Security and Sensors] --> [Smoke Detector (Wi-Fi)].



Install the battery to make the power on, press the button on the side of the device and hold on for 5 seconds to enter into the Wi-Fi configuration state (the red standby indicator flashes fast indicates that it is in the EZ mode configuration mode. If the indicator light flashes slowly, it indicates it is in the AP configuration mode). There are two modes displays in the APP interface which can be switched to each other before configuration start. As below:

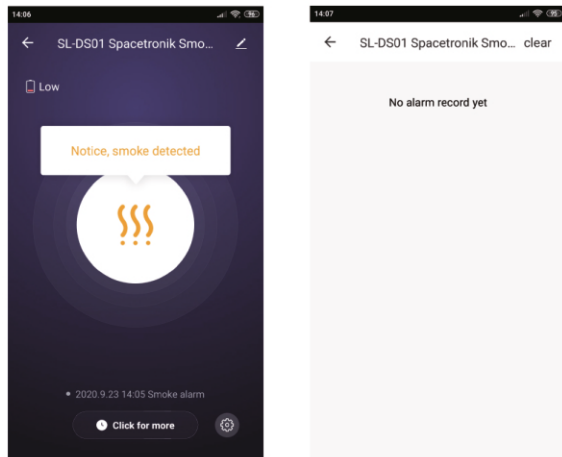
- 5 -



Input the Wi-Fi SSID and password according to the APP prompt to start the connection, wait about 60 seconds to complete the device's network configuration and its connection to the Tuya cloud server, synchronization with the APP. It will jump to the APP operation and monitoring interface directly when the device add completely.

You can modify the device name or share the device to other people through the APP directly. The device operation interface can see its status, alarm, offline and alarm release, etc., check history records and other setting options.

- 6 -



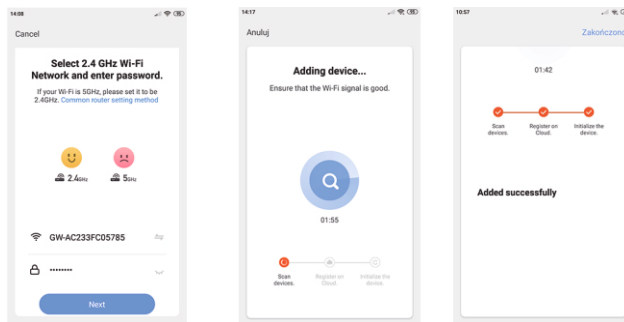
Remarks:

Ensure the device and APP work under the same Wi-Fi network to make sure the validity of the device, which is set through **EZ** mode or **AP** mode, then the device information recognized by the APP is valid. When the **EZ** mode does not work due to the Wi-Fi network condition, choose **AP** mode to complete the configuration of the device and APP.

- 7 -

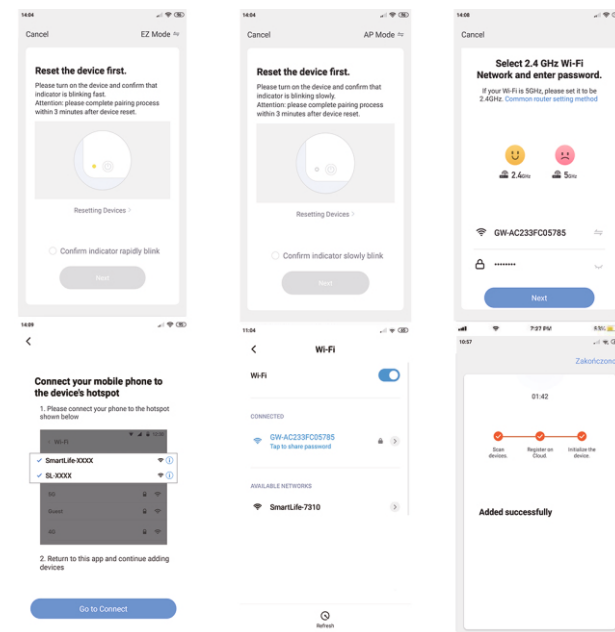
EZ Mode

When configuring in EZ mode, make sure that the Wi-Fi network connect to the Internet normally, then ensure the APP and the device work in the same Wi-Fi network. Input the SSID and password to connect the device with cloud server to accomplish the configuration. If need to use different Wi-Fi network, choose „Change network“ through the APP.



AP mode

When configuring in AP mode, make sure that the Wi-Fi network connect to the internet normally, then ensure the APP and the device work in the same Wi-Fi network. Input the SSID and password, the device use to run the APP (mobile or tablet) connect to the Wi-Fi network "SmartLife-xxxx" in the AP mode (select by the Wi-Fi Network list), it will return to the APP when connect successfully and complete the configuration automatically.

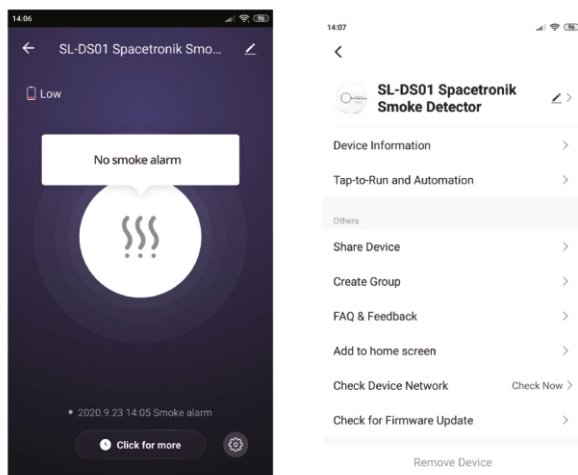


- 9 -

When the device is added to the Tuya smart user account, the LED goes out, the APP jumps to the operation interface, indicates that the device is added successfully. If not succeed, repeat the steps until add it successfully.

Delete Device:

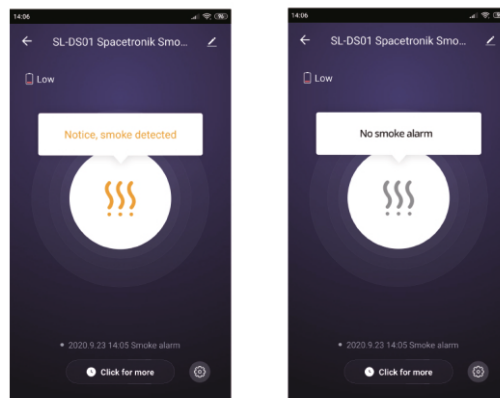
Select the [Edit] icon to enter into the operation interface. Click [Remove device] to delete it.



- 10 -

Smoke Detection Alarm

Once the detector detects that the smoke concentration reaches the alarm preset degree, red LED will flash rapidly, the horn will beep shortly and quickly and display different status according to the states. The alarm data is delivered to the cloud server, the cloud server will transmit the alarm information to the APP simultaneously. The APP interface displays as below:



Other Operations

Other operations of the device and APP, please pay attention to the design and updates of the APP and the device.

Frequency band: 2412 + 2472 MHz | Maximum radio-frequency power: 17 dBm

- 11 -

Led indicators and horn Patterns

CONDITION	LED	HORN
Normal Operation	LED light at the press button location will flash every 20	None
Test Condition	Red LED flashes rapidly.	Short quick beeps
Alarm Condition	Red LED flashes rapidly.	Short quick beeps
Hush Mode	LED light at the press button location will flash every 20 seconds.	None
Low Battery	LED light at the press button location will flash every 20 seconds.	One beep every 20 seconds
Malfunction	LED light at the press button location will flash every 20 seconds.	Along beeps

Hereby Spacetronek Sp. z o.o. declares under its sole responsibility that the product SL-DS01 is in conformity with following directives: RED (2014/53/EU), RoHS (2011/65/EU + 2015/863/EU). Full document (declaration of conformity) is available for download from the website www.spacetronek.eu.

The WEEE symbol (the crossed-out wheeled bin) using indicates that this product is not home waste. Appropriate waste management aids in avoiding consequences which are harmful for people and environment and result from dangerous materials used in the device, as well as improper storage and processing. Segregated household waste collection aids recycle materials and components of which the device was made. In order to get detailed information about recycling this product please contact your retailer or a local authority.

Made in P.R.C. for:
Spacetronek sp. z o.o.
ul. Wiśniowa 36, 64-000 Kościan, Poland
info@spacetronek.eu
www.spacetronek.eu



RoHS
MADE IN P.R.C.



- 12 -